

CHYBIK + KRISTOF +
67 ARCHITECTS +
90 CLIENTS +
19 COUNTRIES =
571 PROJECTS;
1 BOOK;
4 OFFICES



LONDON

PRAGUE

BRNO

BRATISLAVA



15 YEARS =

20+ BUILDINGS COMPLETED;

4 MASTERPLANS DELIVERED;

1700 BUILT UNITS;

850 UNITS UNDER CONSTRUCTION

2000+ UNITS IN PLANNING;

ALL MAJOR SECTORS;

51 AWARDS







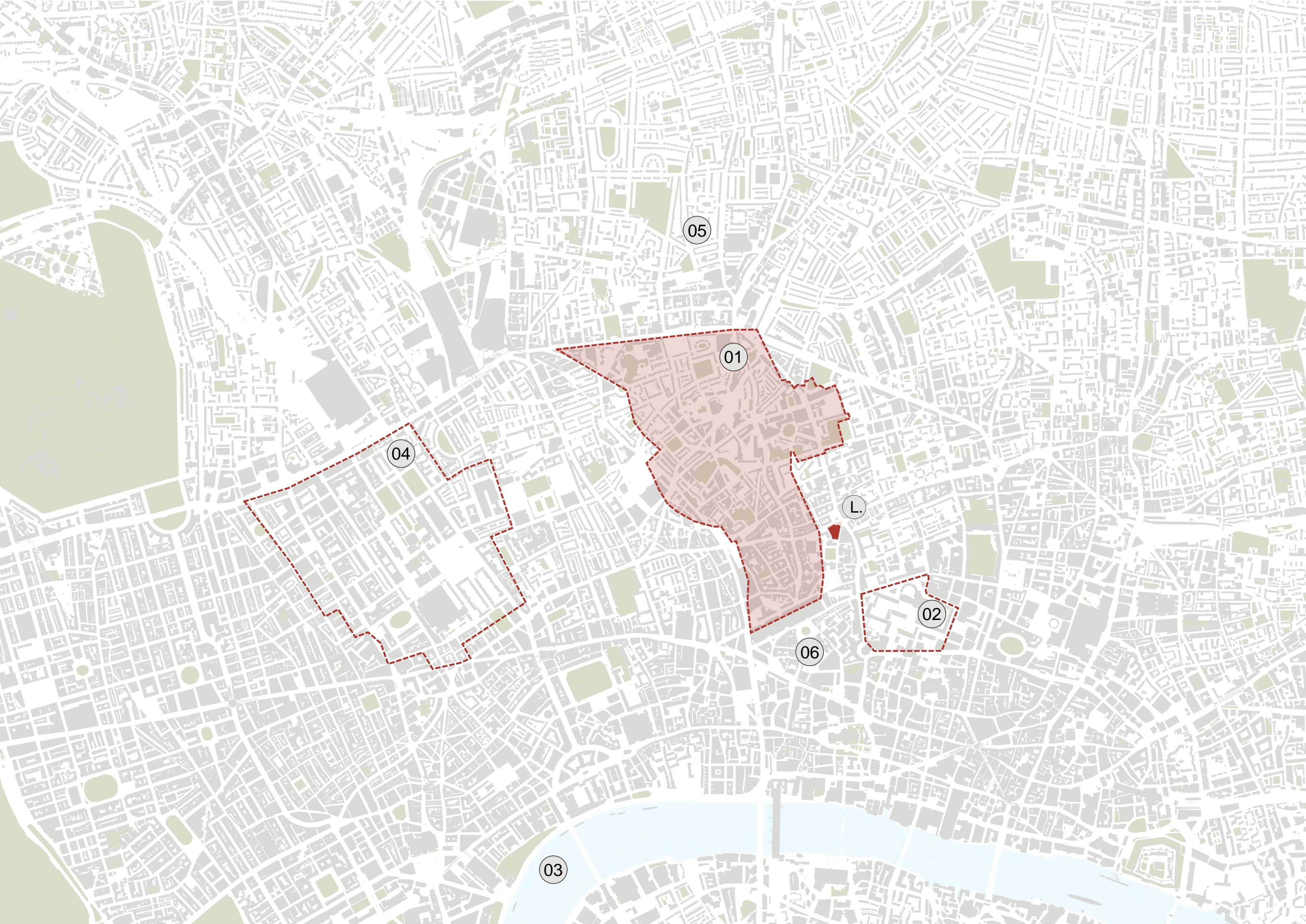








CHYBIK + KRISTOF +
BOHEMIAN CRAFT =
ATELIER BOHEMIA
CLERKENWELL



05

01

04

L.

02

06

03



01. St James`s Church



02. Canon St 1939



03. National Westminster Bank in Clerkenwell



04. Historical London public houses, taverns, Inns, Beer Houses



05. Busy street scene of Rosoman Street, nowadays Spa fields

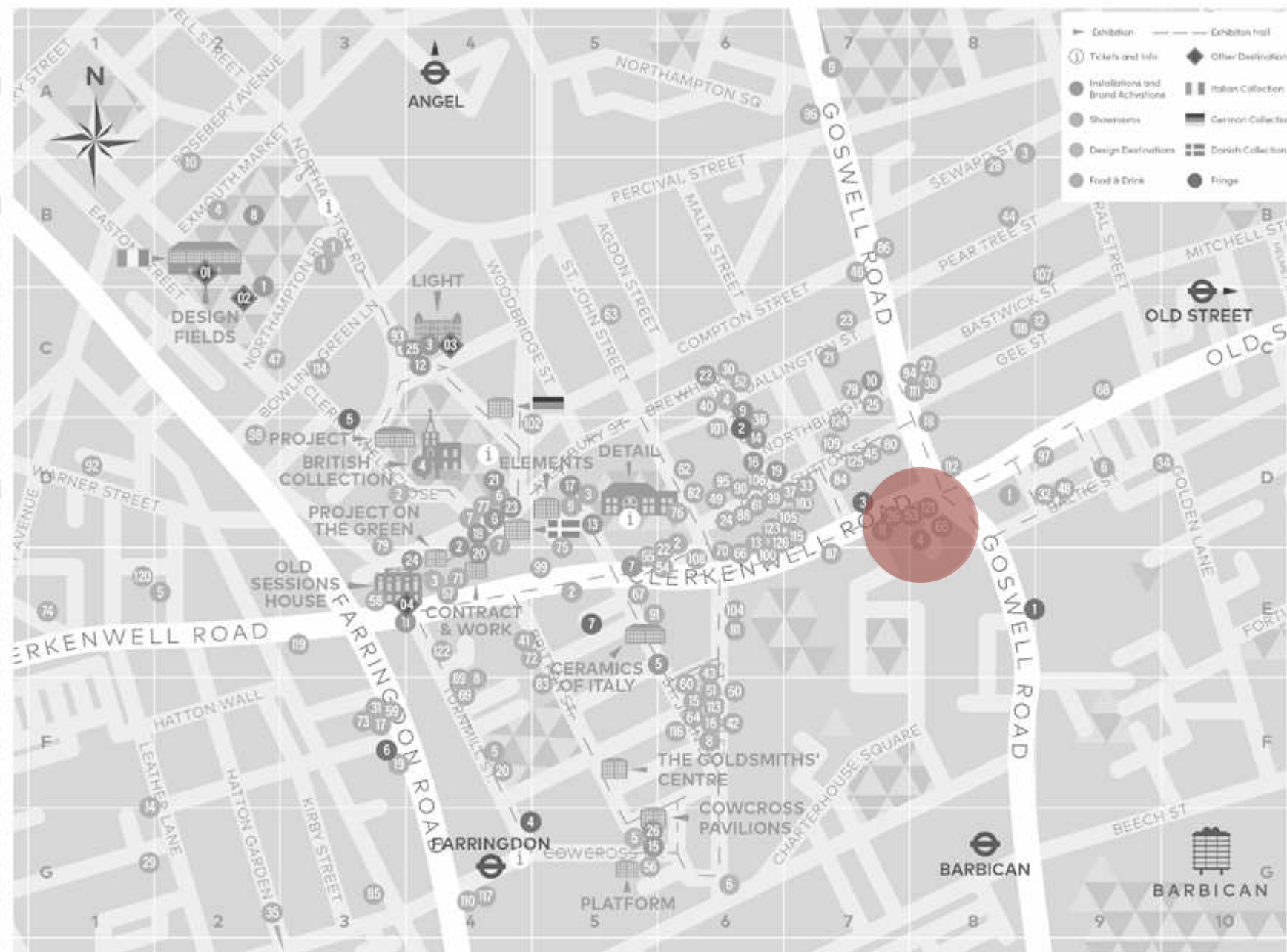


06. Windmill, New River Head.

SHOWROOMS

imid
 Abstracta
 Actiu
 Ahrend UK
 Allermuir
 Ailsfär
 Altro
 AM Acoustic
 Andreu World
 Armourcoat
 Arper
 Arrow Group
 Ascot Signs
 ASSMANN
 Astro Lighting
 Atlas Concorde
 Bachmann Electrical
 Engineering Ltd.
 BALSAN
 Bene
 Bert Frank
 BBS UK
 Bisley
 Blä Station
 Blum
 Boen Design Hub
 Bolon UK
 Boss Design
 Bralco
 Brunner UK
 Bulo @ Welltek
 BuzzSpace
 Caffia
 Camira
 Canarutti
 Casala
 Ceramiche Caesar
 Chat Board
 Cleaf
 CMD Ltd
 Cosentino
 David design
 Davison Highley
 Designer Doorware
 Dieffebi
 Domus
 Edsbyn
 Ege Carpets
 EGGER
 EH Smith Architectural Solutions
 Elite Office Furniture
 EnviroBuild
 Era
 ERCO Lighting +
 Zaha Hadid Architects
 EXPORMIM
 Extremis
 Exubia
 FDB MOBILER
 Flakk
 Florim
 Forbo Flooring UK
 Forma 5 & esPatio
 Formica Group
 Framery
 Frem Group
 Fritz Fryer Lighting
 Fritz Hansen
 Frövi

- 1
- 2
- 3
- 4
- 5
- 6
- 7
- 8
- 9
- 10
- 11
- 12
- 13
- 14
- 15
- 16
- 17
- 18
- 19
- 20
- 21
- 22
- 23
- 24
- 25
- 26
- 27
- 28
- 29
- 30
- 31
- 32
- 33
- 34
- 35
- 36
- 37
- 38
- 39
- 40
- 41
- 42
- 43
- 44
- 45
- 46
- 47
- 48
- 49
- 50
- 51
- 52
- 53
- 54
- 55
- 56
- 57
- 58
- 59
- 60
- 61
- 62
- 63
- 64
- 65
- 66
- 67
- 68
- 69
- 70
- 71
- 72
- 73
- 74
- 75
- 76
- 77
- 78
- 79
- 80
- 81
- 82
- 83
- 84
- 85
- 86
- 87
- 88
- 89
- 90
- 91
- 92
- 93
- 94
- 95
- 96
- 97
- 98
- 99
- 100



Scan Sorlie
Sedus UK
Senator
Shaw Contract
sixteen3
Solus
Soundtect Ltd
Spacecator
Square Bear
Stolab
STORY
Swedese
Table Place Chairs
Taiga
Tarkett
Teknon
The Gallery Clerkenwell
The Splash Lab
The Vault
Ton
TreCe
True Design
Unilin Panels
Vantage Spaces
Vepa UK Ltd
verco
Vescom UK
Viaduct
Vigint
Vitra
Wagstaff & Umbrella Furniture
Wilkhahn
William Hinds & Gordon
workbench
Worktories
Your Workspace
Zero Lighting
Zip Water

**INSTALLATIONS
& BRAND ACTIVATION**

2LG - Stay Playful (Where
One Feels Like Playing)
Albion Stone and Hutton
- Brick from a Stone
Ben Cullen Williams
- Grid System
Benchmark x London
Metropolitan University
- Aldgate Gold
Duffy London and Orsi
- Gatekeepers
Dyson
Frem Group
Geberit
Haywoods
Jeslicio + Whiles x Balon
Karnadean
Lois O'Hara and
Rannie Chapple - Cannon
Material Bank
Millboard
Parametric Walls - Turner
Pufffloor
Russell Bamber - Scoop
Silen
Stansons
Stone Federation
Switchbox
TC Group - Shoal
Texas

[illegible]

F4	Umage
D6	Universal Fibres
E2	Zip Water UK
D6	
B9	DESIGN DESTINATION
E6	The Edit at Bourne & Ho
D7	Groupwork
G4	Clerkenwell Green
C6	Brewhouse Yard
C8	Cowcross Yards
E5	The Bank
C6	
D8	OTHER DESTINATION
B8	Conversations at Clerke
F0	Design Meets
C3	[d]arc thoughts
D7	Press office
D7	
F6	FOOD AND DRINK
C6	Bourne & Hollingsworth
C8	Brewdog Clerkenwell
C6	Compton Restaurant
D7	Gerry's Hot Subs
G4	Iberica Farringdon
C8	La Dispensa
E3	The Crown Tavern
D6	The White Bear
E1	The Zetter Clerkenwell
D8	
E4	FRINGE
C6	Cult Vision
D7	Future Laboratory
D7	- Kingston University
D6	Hawkins Brown
D6	HOP
D7	Kibre
D7	Nimaya
E6	Pilbrow and Partners
D8	
	EXHIBITION VENUE
	Design Fields
	Italian Collection
C2	Light
	German Collection
E4	Project
	British Collection
C4	Detail
	Elements
	Danish Collection
D4	Project on the green
	Contract & Work
E6	Old Sessions House
D4	Ceramics of Italy
E5	The Goldsmiths' Centre
B2	Cowcross Pavilions
C6	Platform
C7	
E3	
C4	
D5	
D6	
G5	
D6	
D5	
D4	
D6	
E4	
D4	
C6	
D4	

24	1	
25	2	
26	3	
	4	
	5	
	6	
	1	
	2	
	3	
	4	
	5	
	6	
	7	
	0	
	8	
	1	
	2	
	3	
	4	
	5	
	6	
	7	



01. Showrooms & Light installations



02. Art installations



03. Parties & Networking



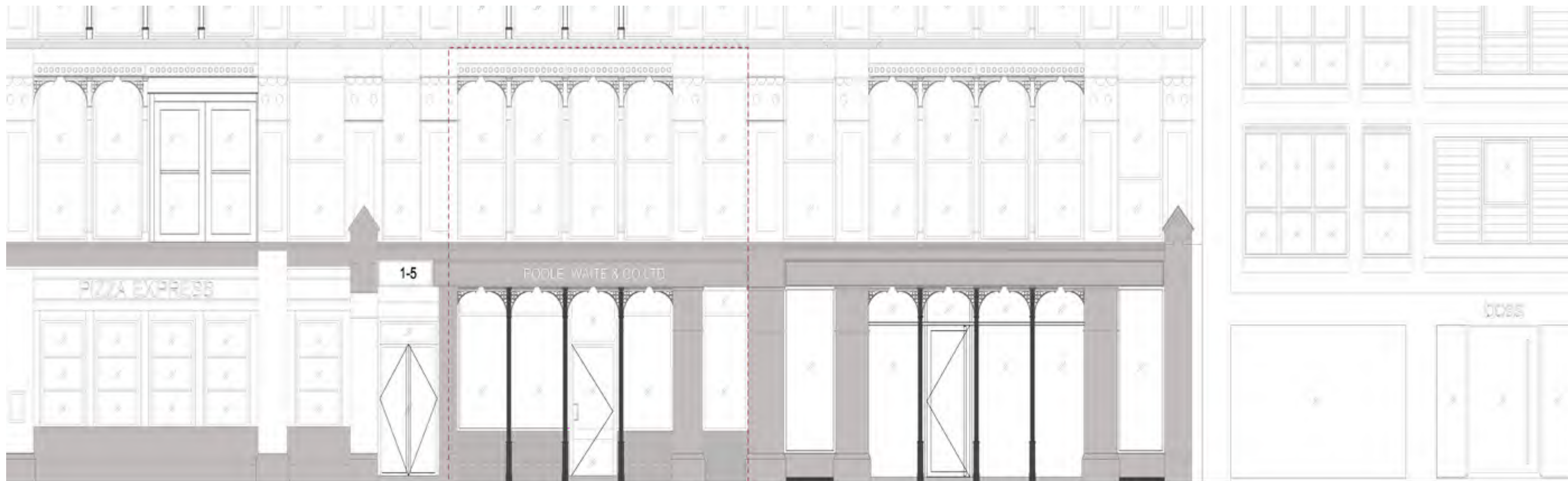
04. Exhibition & Design venues



05. Workshops



06. Lectures



1 Clerkenwell road




Entrance to
offices above

3 Clerkenwell road

5 Clerkenwell road

7 Clerkenwell road

PROGRAM

FIRST FLOOR	
Luxury high-end apartment	
GROUND FLOOR	
Gallery showroom	
BASEMENT	
Cowork space + bar + showroom	



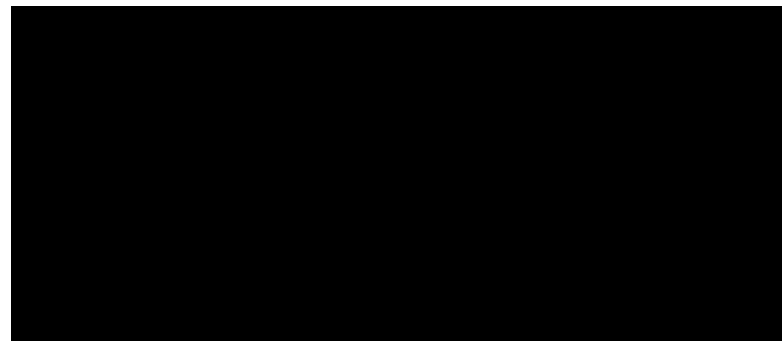
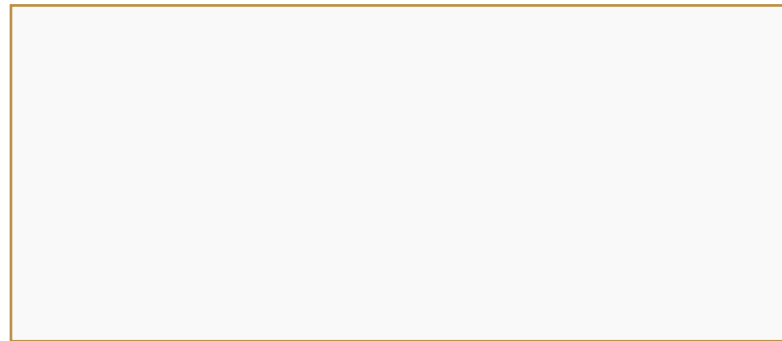
Showroom for Czech Design companies



Co-Working and Bar space



Luxury high-end apartment



+



Monochromatic canvas

Introducing the concept of three monochromatic canvases: the ground floor in white, the first floor in emerald green, and the basement in black.

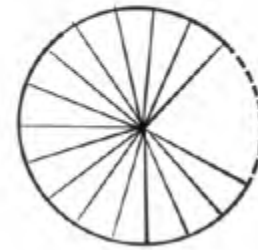
Diverse Products

A variety of products from Czech designers and companies

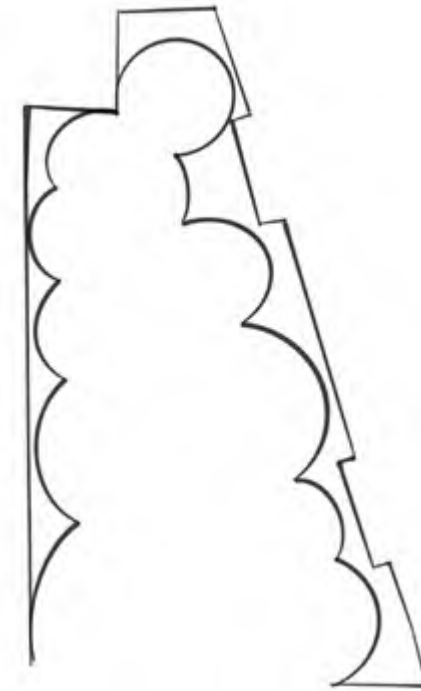
CONCEPT +
PROPOSAL



01. The History



02. The Response



03. The Intervention

CONCEPT
GROUND FLOOR



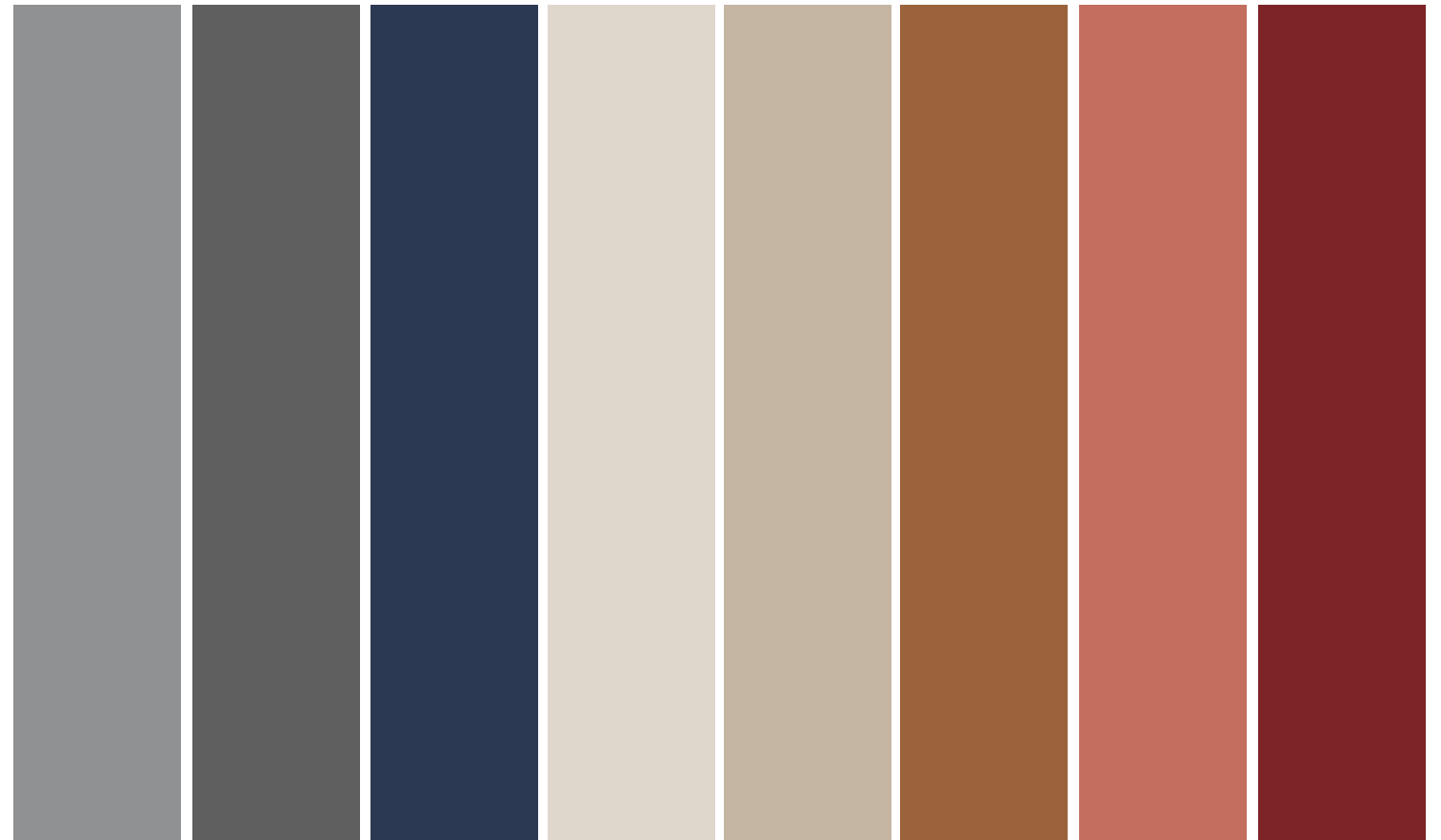
*showroom
&
event Space*





SURFACE TREATMENT

Colours used in the ground floor



FURNITURE COLOURING

Product colours used in the ground floor

● **01. Existing Concrete Structure**

The existing column requires brushing.

● **02. Existing Steel Column**

Color Code for Column Paint: No. 212 Blazer
Brand: Farrow & Ball

● **03. Staircase Leading Downstairs**

Cladding: Oak veneer finished in black paint

● **04. Solid Rounded Staircase**

Solid rounded staircase with cladding in white plaster

● **05. Niche in Curved Wall Structure**

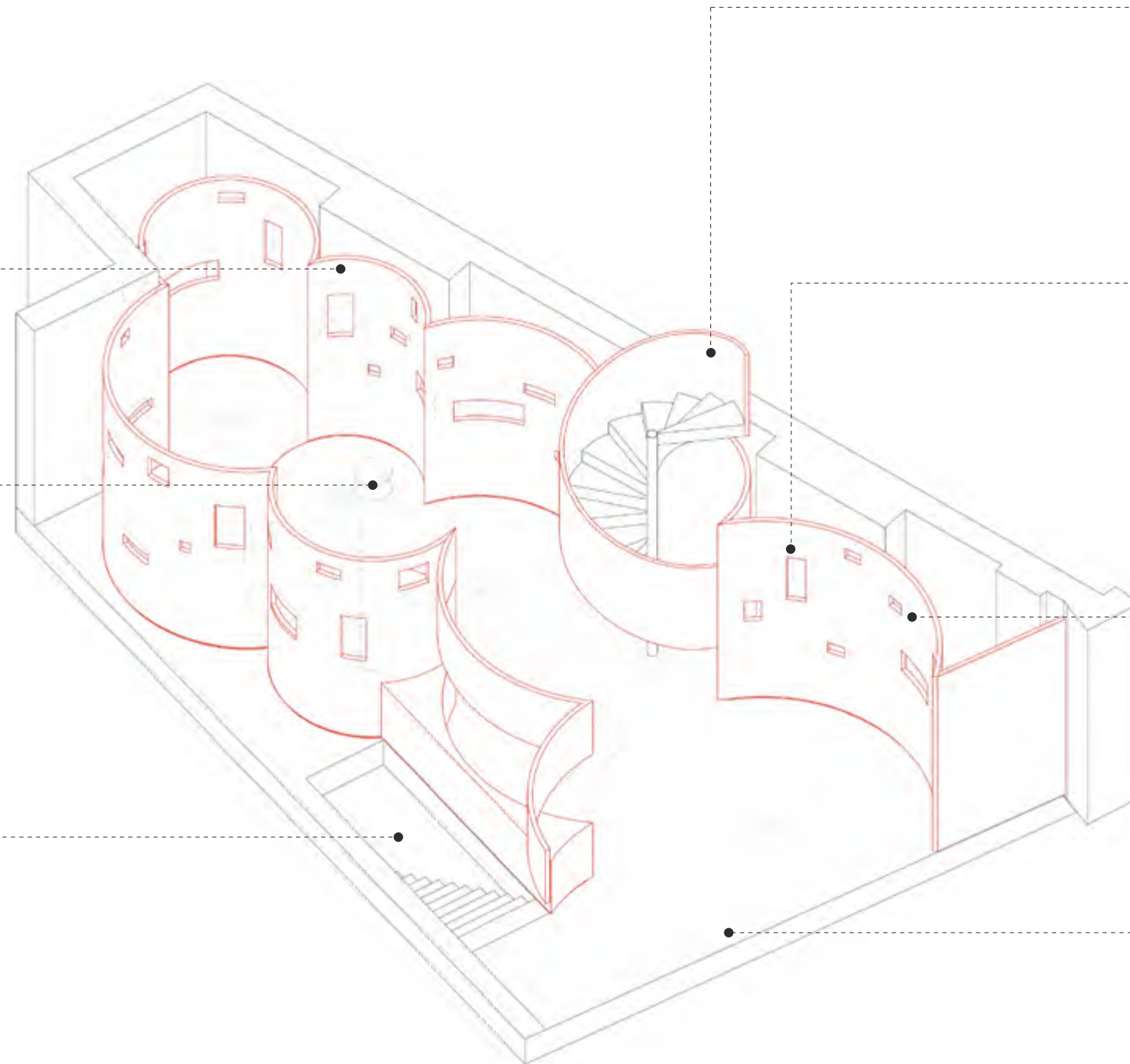
Niche plaster cladding

● **06. Curved structure**

Curved wooden structure with white plaster cladding, finished with a smooth, durable paint.

● **07. Flooring**

The floor is custom-made by CQ Flooring







CONCEPT
FIRST FLOOR



19th-century Victorian gardens

19th-century Victorian industrial gardens, known for their grand glass structures, lush greenery, and elegant ironwork.

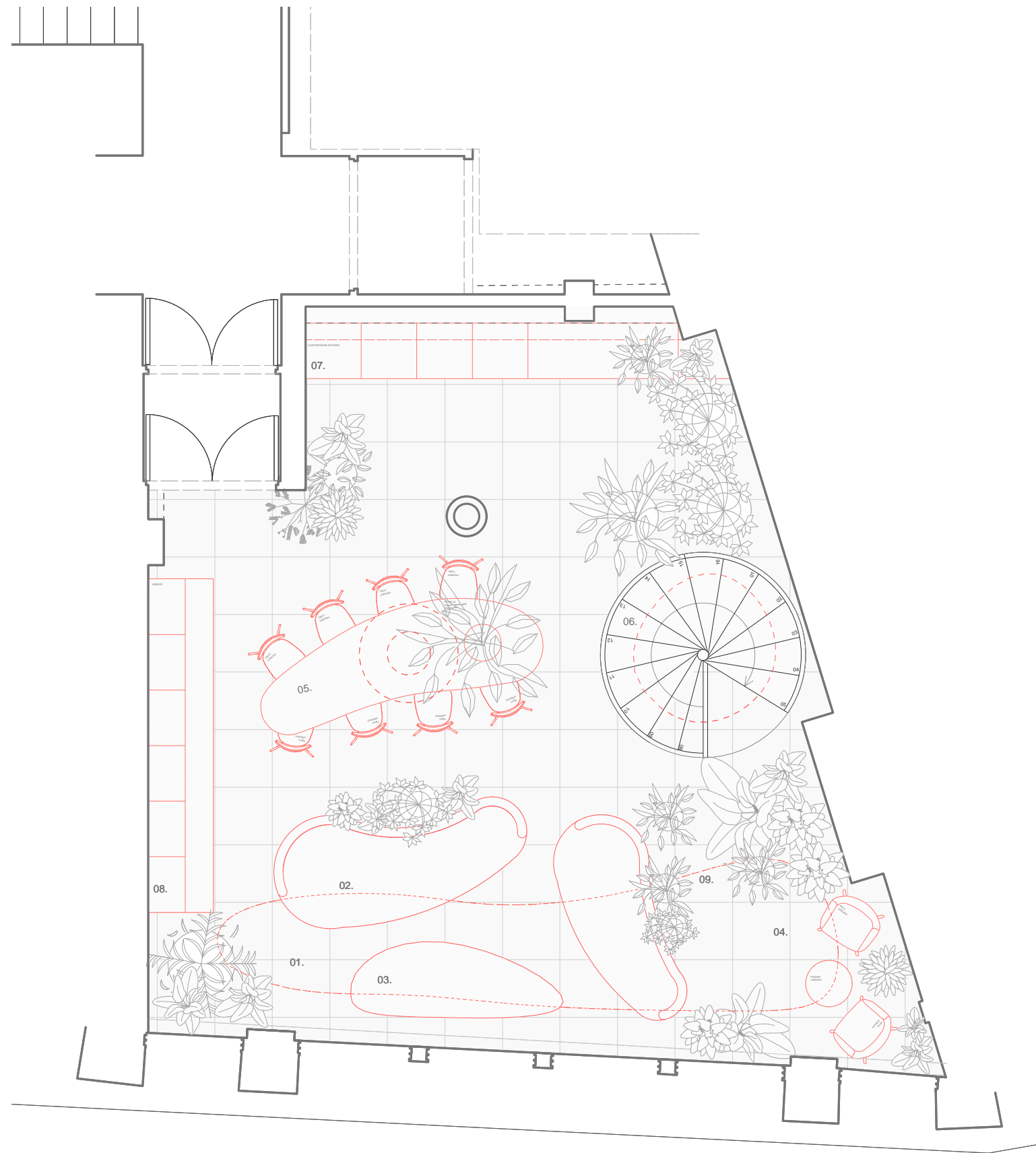


Clerkenwell road no.3

A small space with a big story, where history and present meet.



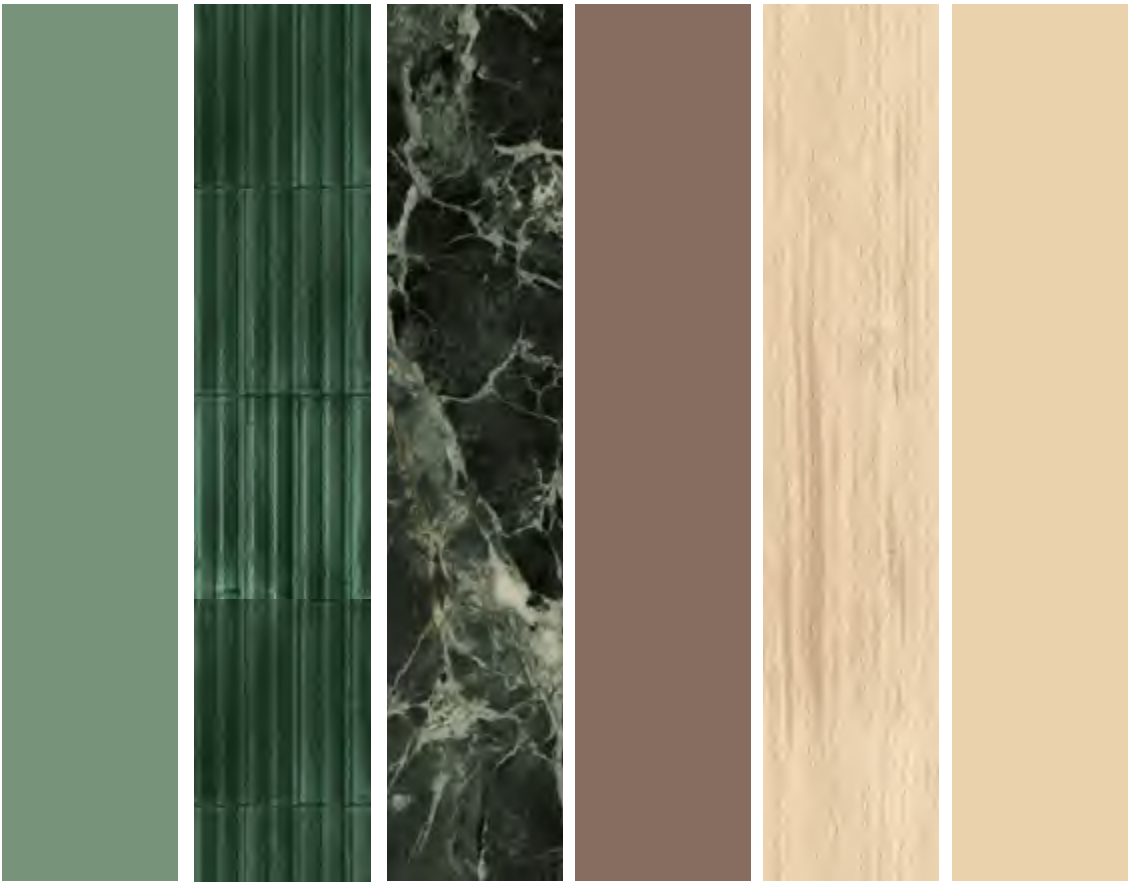
Kew Gardens, London





Surface treatment

Materials used in the first floor



Furniture material and colours

Product colours used in the first floor

CHYBIK + KRISTOF + BOHEMIAN CRAFT + UNITED CRAFTS OF BOHEMIA=

AXONOMETRY

01. Wall Paint

Color Code: No. 310
Beverly
Brand: Farrow & Ball

02. Furniture Piece:

Library Element
(Floor to Ceiling)
Material: Wood / Oak
Product by Attellu in
consultation with C+K
Architects

04. Furniture piece:

Custom Dining Table by
Attellu in consultation with
C+K Architects
Material: Solid Wood

03. Furniture piece:

Custom Sofa by Polstrin
in consultation with C+K
Architects

05. Furniture piece:

Kitchen Element
(Floor to Ceiling)
Material: Wood / Oak
Product by Attellu in
consultation with C+K
Architects

06. Steel Column

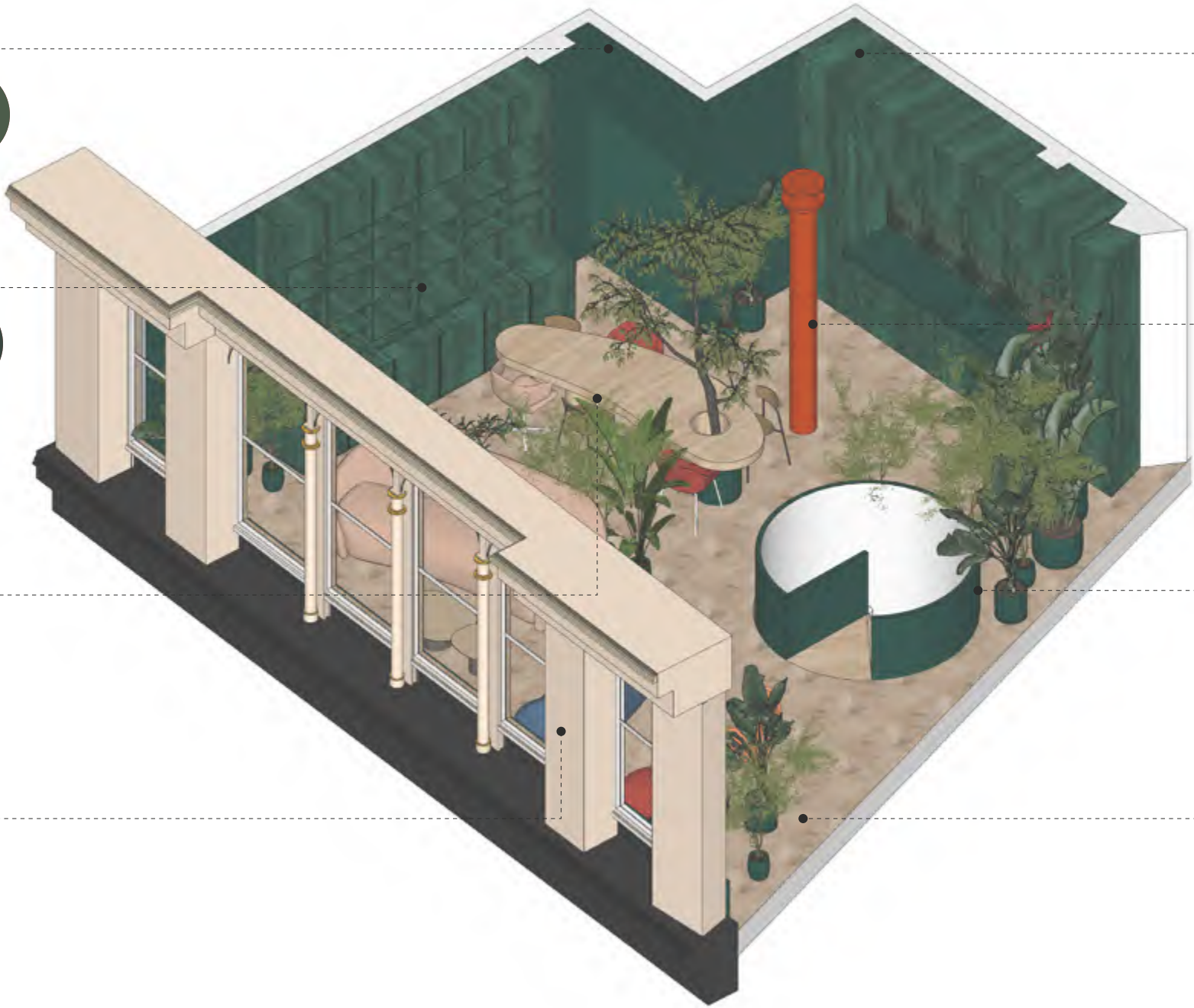
Color Code for Column
Paint: No. 212 Blazer
Brand: Farrow & Ball

07. Staircase Cladding

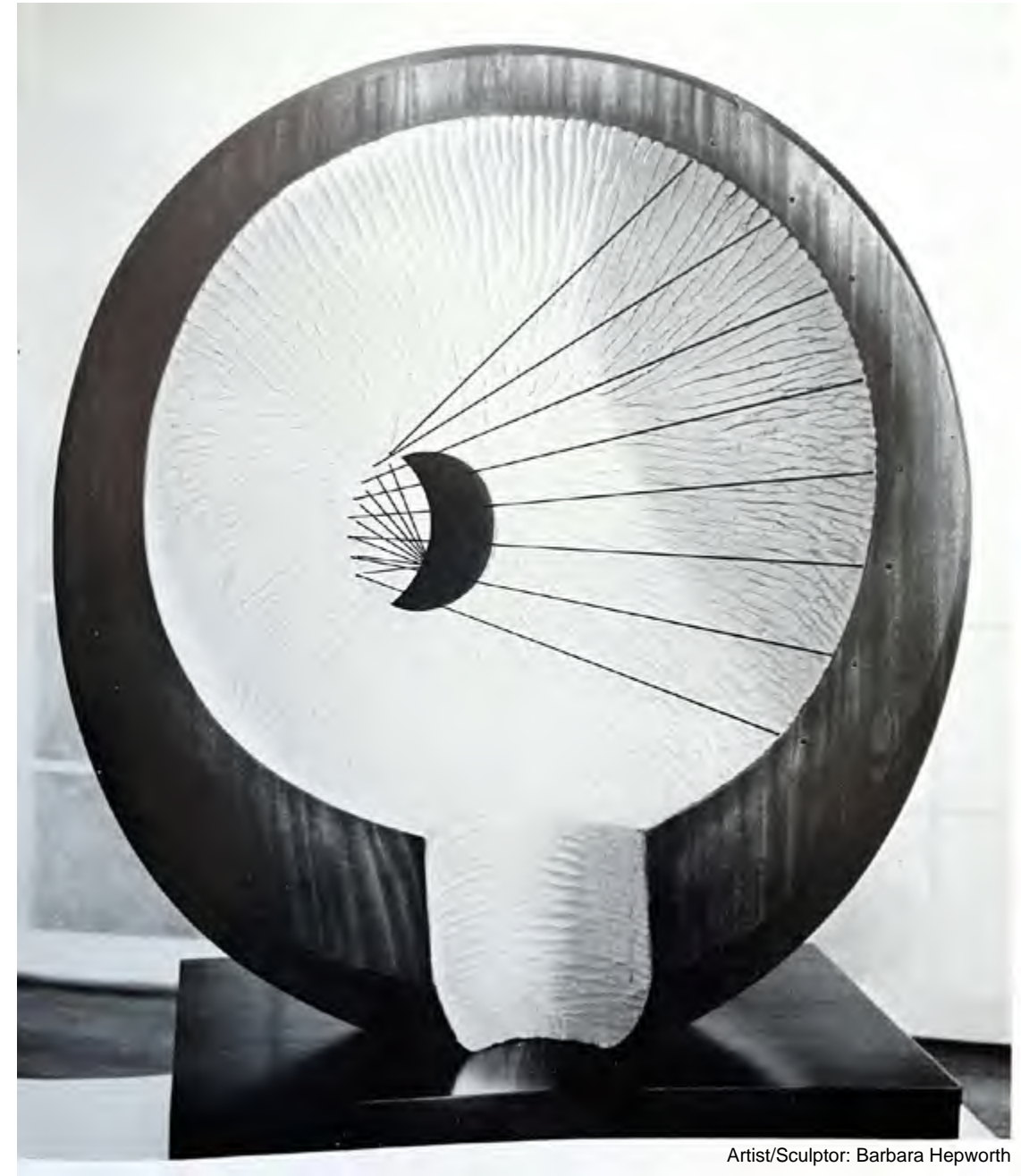
Product by Bohemian
Craft
Material: Wood / Oak

08. Flooring

Brand: QC Flooring
Product:
Vaux le Vicomte

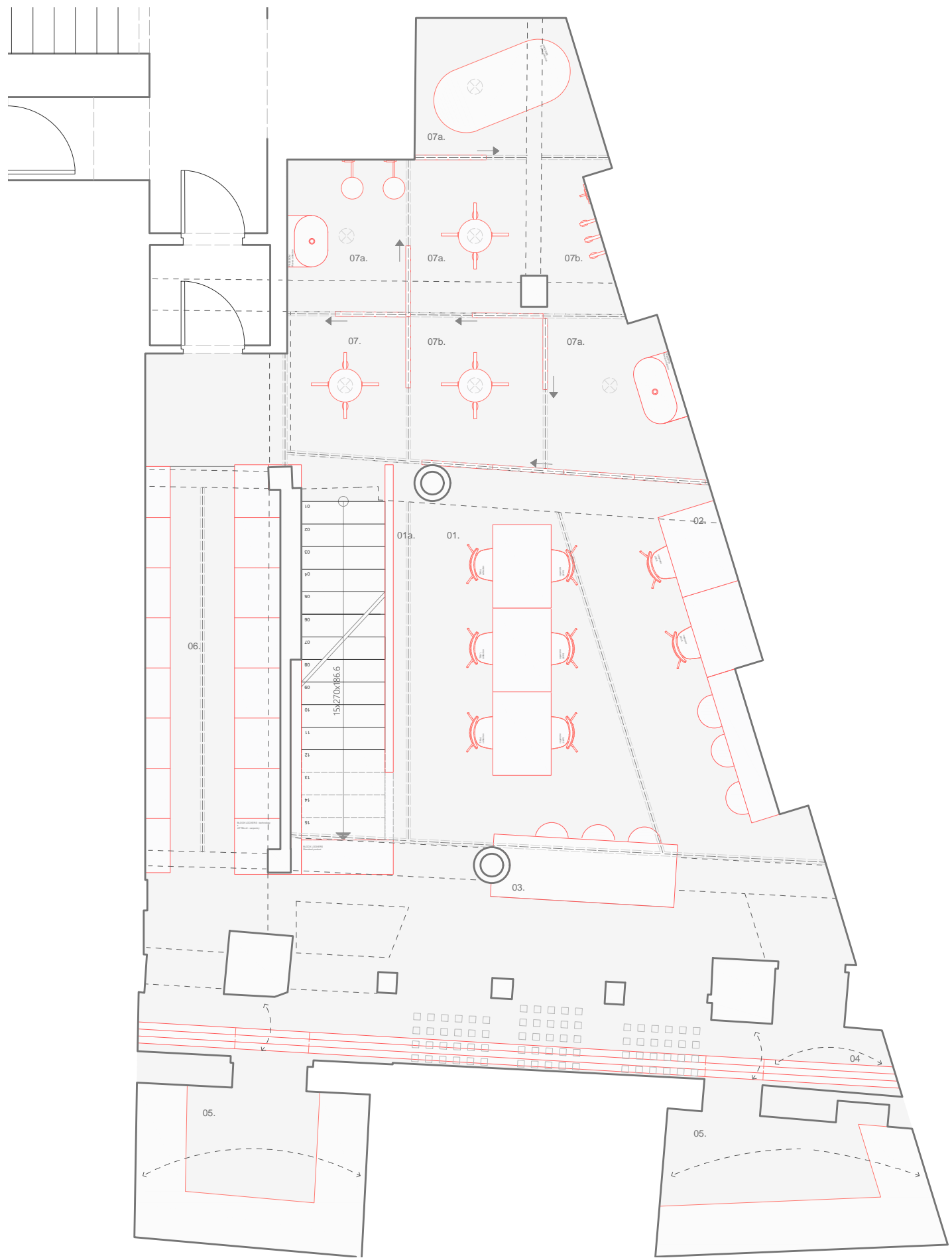


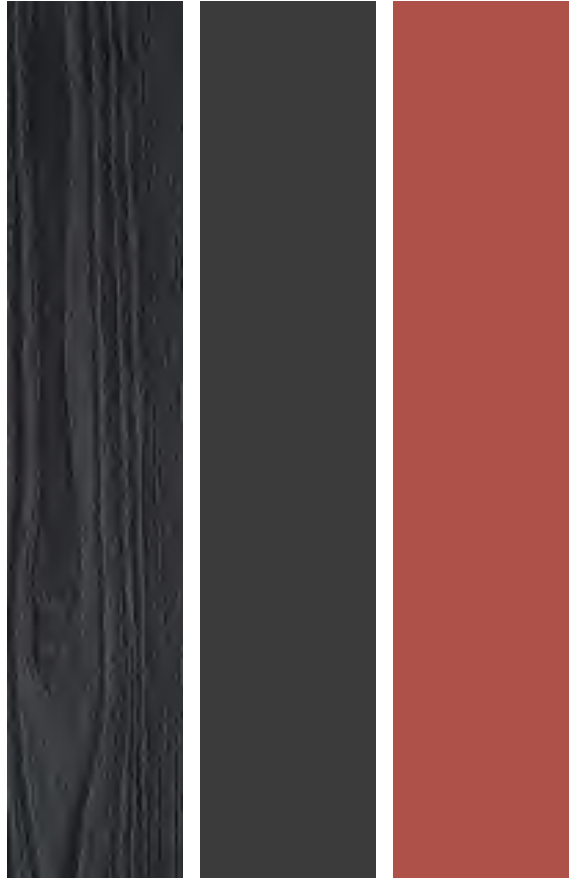
CONCEPT
UNDERGROUND



Artist/Sculptor: Barbara Hepworth

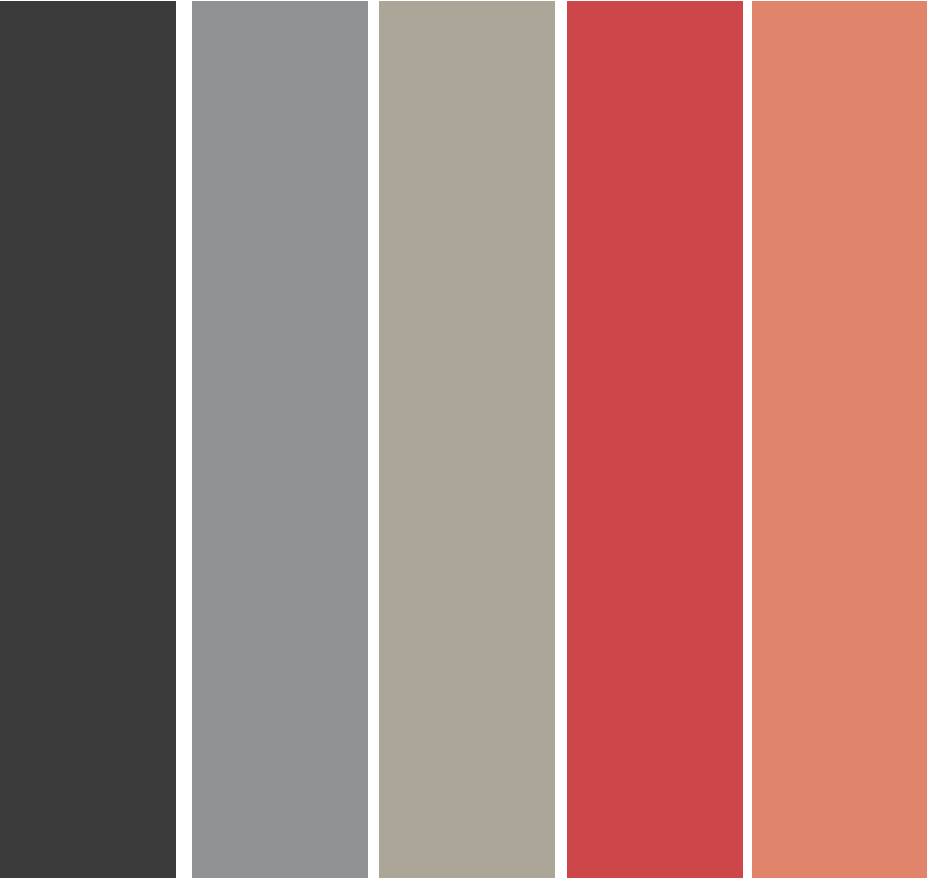
SCULPTING THE VOID





Surface treatment

Materials used in the underground floor



Furniture material and colours

Product colours used in the underground floor

●

01. Continuous Glass Brick Wall

Glass brick product provided by Novavita.

●

02. Glass brick bar

Product provided by Novavita

●

03. Co-Work Zone Tables

Product by Novavita and Attellu.
Leg structure by Attellu.
Tabletop by Novavita.

●

04. Block lockers product

Standard product from Block lockers

●

05. Build in shelves

Producer: Attellu
Technology: Block lockers

●

06. Built-in Shelves Under the Staircase

Producer: Bohemian craft

●

07. Suspended Railing

Attached acoustic panels from Polstrin.

●

08. Wall surface

Wall paint colour code:
No. 256 Pitch black,
Company: Farrow and Ball







*showroom
&
event Space*

